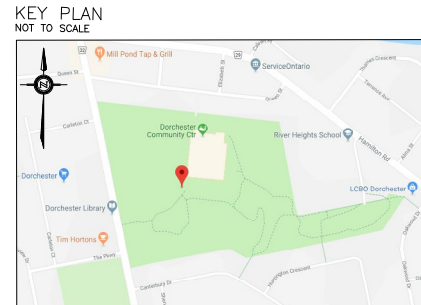
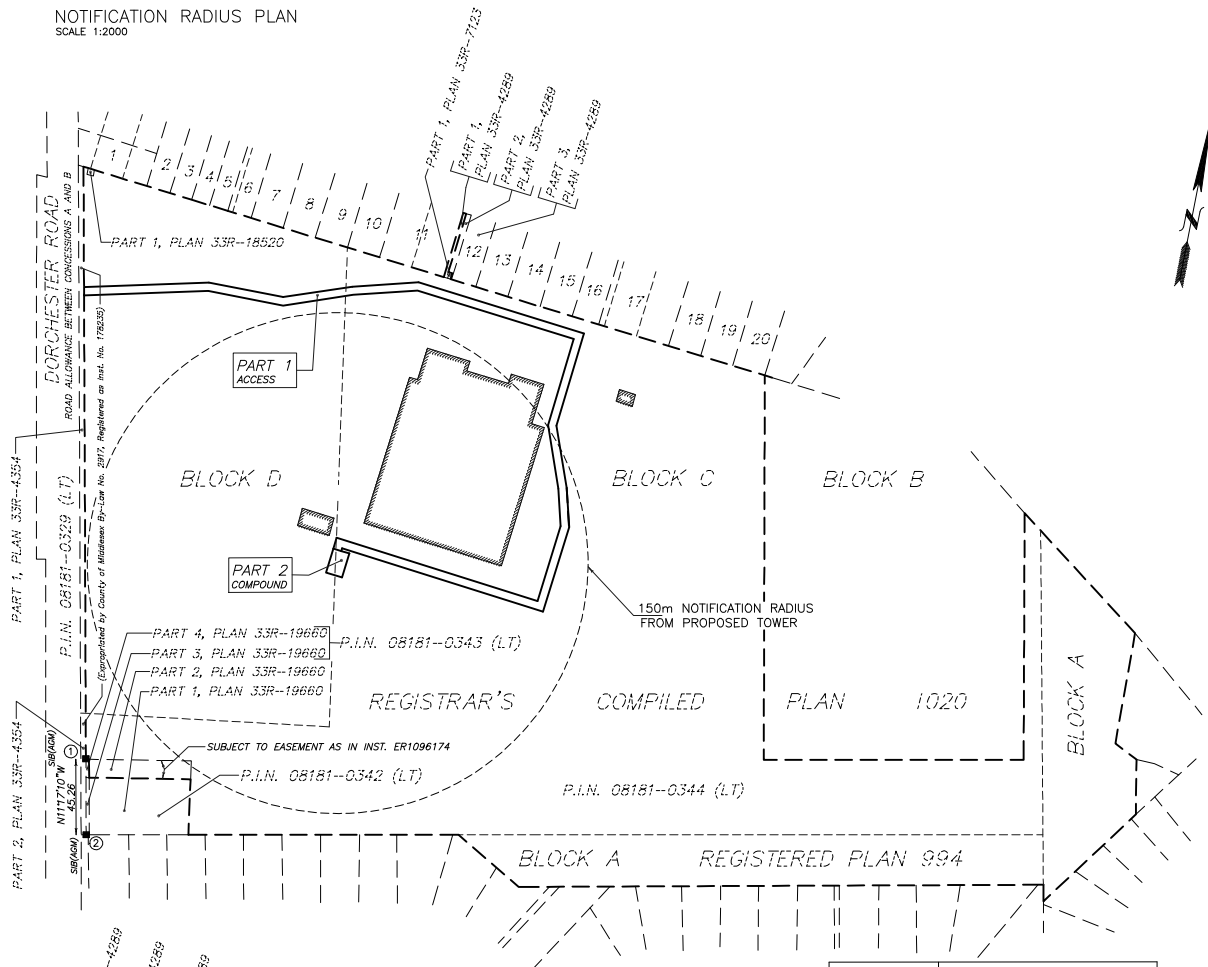


SITE DATA		EXISTING	PROPOSED
PROPERTY AREA		±16.56ha	
AREA LEASED			3002 sq.m.
ACCESS(PART 1)			150 sq.m.
COMPOUND (PART 2)			3152 sq.m.
TOTAL			3152 sq.m.
UNITS			1 PROPOSED RADIO EQUIPMENT SHELTER 1 PROPOSED SHROUDED MONOPOLE
HEIGHT OF TOWER			50.00M
SETBACKS			
PROPOSED STEEL MONOPOLE			
FRONT (DORCHESTER ROAD)		±151 m	
SIDE (NORTH)		±182 m	
PROPOSED ROGERS RADIO EQUIPMENT SHELTER			
FRONT (DORCHESTER ROAD)		±152 m	
SIDE (NORTH)		±186 m	

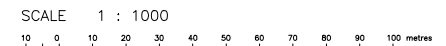


- LEGEND**
- DENOTES SURVEY MONUMENT FOUND
 - SIB STANDARD IRON BAR
 - AGM ARCHIBALD, GRAY & McKAY LTD. O.L.S.
 - N,S,E,W NORTH, SOUTH, EAST, WEST
 - PN PROPERTY IDENTIFIER NUMBER
 - UP UTILITY POLE
 - CR CENTERLINE
 - O/H OVERHEAD
 - MH MANHOLE
 - LS LIGHT STANDARD
 - CB CATCH BASIN
 - Ø DIAMETER
 - 293.05 ELEVATION ON THE GROUND
 - ⊙ DECIDUOUS TREE

NOTIFICATION RADIUS PLAN
SCALE 1:2000



SITE PLAN
PROPOSED
TELECOMMUNICATION INSTALLATION
2066 DORCHESTER ROAD
PART OF BLOCKS A, C & D
REGISTRAR'S COMPILED PLAN
No. 1020
BLOCK A, REGISTERED PLAN 994
MUNICIPALITY OF THAMES CENTRE
COUNTY OF MIDDLESEX



ALEX MARTON LTD.
ONTARIO LAND SURVEYORS

METRIC
DISTANCES AND COORDINATES SHOWN ON THIS PLAN ARE IN METRES AND CAN BE CONVERTED TO FEET BY DIVIDING BY 0.3048.

SCHEDULE

PART	BLOCKS	REGISTRAR'S COMPILED PLAN	P.I.N.	AREA sq.m
1	C & D	1020	08181-0344 (LT)	3002
2				150

INTEGRATION NOTE

BEARINGS SHOWN ARE GRID BEARINGS AND ARE DERIVED FROM OBSERVED REFERENCE POINTS (ORP'S) 1 AND 2 BY REAL TIME NETWORK OBSERVATIONS, UTM ZONE 17, NAD 83 (CSRS) (1997.0 EPOCH).

DISTANCES SHOWN ON THIS PLAN ARE GROUND DISTANCES AND CAN BE CONVERTED TO GRID DISTANCES BY MULTIPLYING BY THE COMBINED SCALE FACTOR OF 0.99957.

INTEGRATION DATA

OBSERVED REFERENCE POINTS (ORP'S) DERIVED FROM GPS REAL TIME NETWORK OBSERVATIONS AND ARE REFERRED TO UTM ZONE 17, NAD 83 (CSRS) (1997.0). COORDINATE VALUES ARE TO URBAN ACCURACY PER SECTION 14 (2) OF O. REG 216/10		
POINT ID	NORTHING	EASTING
ORP 1	4759041.724	495344.403
ORP 2	4758997.340	495353.262

COORDINATES CANNOT, IN THEMSELVES, BE USED TO RE-ESTABLISH CORNERS OR BOUNDARIES SHOWN ON THIS PLAN.

ELEVATION NOTE

ELEVATIONS SHOWN HEREON ARE GEODETIC AND ARE DERIVED FROM GPS OBSERVATIONS USING REAL TIME NETWORK OBSERVATIONS.

SURVEYOR'S CERTIFICATE

I CERTIFY THAT:
1. THE SURVEY WAS COMPLETED ON THE 30TH DAY OF JUNE, 2018.

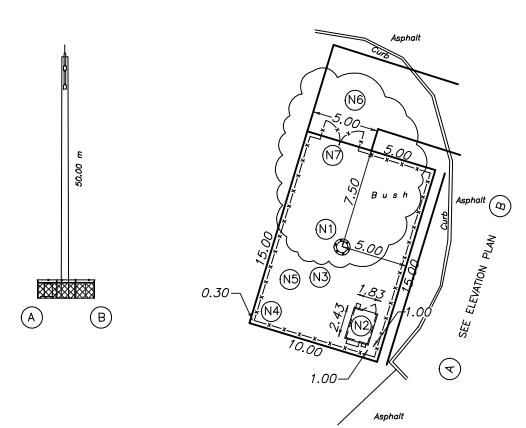
JULY 11, 2018
DATE

A. MARTON
ONTARIO LAND SURVEYOR

NUMBER	P.I.N.
1	08181-0158 (LT)
2	08181-0160 (LT)
3	08181-0161 (LT)
4	08181-0162 (LT)
5	08181-0163 (LT)
6	08181-0164 (LT)
7	08181-0165 (LT)
8	08181-0166 (LT)
9	08181-0167 (LT)
10	08181-0168 (LT)
11	08181-0169 (LT)
12	08181-0170 (LT)
13	08181-0171 (LT)
14	08181-0172 (LT)
15	08181-0173 (LT)
16	08181-0174 (LT)
17	08181-0175 (LT)
18	08181-0176 (LT)
19	08181-0177 (LT)
20	08181-0178 (LT)

ELEVATION PLAN
NOT TO SCALE

PROPOSED COMPOUND LAYOUT PLAN
SCALE 1:250



NOTES

- (N1) PROPOSED STEEL SHROUDED MONOPOLE. ANTENNA NUMBER AND LOCATIONS TO BE DETERMINED FOUNDATION DESIGN PENDING SOIL REPORT.
- (N2) PROPOSED RADIO EQUIPMENT CABINETS ON REINFORCED CONCRETE SLAB.
- (N3) HYDRO CONNECTION AND ROUTING TO BE DETERMINED BY QUALIFIED PERSONNEL IN CONSULTATION WITH LOCAL AUTHORITY.
- (N4) PROPOSED 2.4 m HIGH CHAIN LINK SECURITY FENCE TOPPED WITH BARBED WIRE SURROUNDING THE COMPOUND.
- (N5) REMOVE EXISTING TOPSOIL PROOF ROLL SUBGRADE, ADD 300 mm GRANULAR A ACROSS CABINET AREA, FINISHED GRAVEL SURFACE TO BE MINIMUM 150 mm ABOVE EXISTING GRADE AND SLOPED AWAY FROM PROPOSED STRUCTURE AT MIN. 1% IN ALL SIDES TO PROVIDE ADEQUATE DRAINAGE.
- (N6) PROPOSED ACCESS WAY.
- (N7) PROPOSED CHAIN LINK GATE.

AMENDMENTS		
No.	DESCRIPTION	DATE

LATITUDE N42°59'07.2"
 LONGITUDE W81°03'20.0"
 ELEVATION 262.6

SITE: DORCHESTER ROAD (C3965)

ALEX MARTON LIMITED
ONTARIO LAND SURVEYORS
160 APPLEWOOD CRESCENT, UNIT 8,
CONCORD, ONTARIO, L4K 4H2
PHONE: 905-879-8888 FAX: 905-879-0770
E-MAIL: alex@amsurveying.ca
WEBSITE: www.amsurveying.ca

PARTY CHIEF : F.V.W. FILE NAME: 2018-131(C3965).DWG
 DRAWN : F.V.W. PLOT SCALE: 1:1000
 CHECKED : A.M. PROJECT No. 2018-131