

UTM GRID NOTES

BEARINGS ARE U.T.M. GRID NAD83 (CSRS) EPOCH(2010), DERIVED FROM G.N.S.S. OBSERVATIONS AND THE LEICA SMARTNET BASE STATION NETWORK AND ARE REFERRED TO THE CENTRAL MERIDIAN 81°00' WEST LONGITUDE, ZONE 17.

DISTANCES SHOWN ON THIS PLAN ARE GROUND AND CAN BE CONVERTED TO GRID BY MULTIPLYING BY THE COMBINED SCALE FACTOR OF 0.99956102.

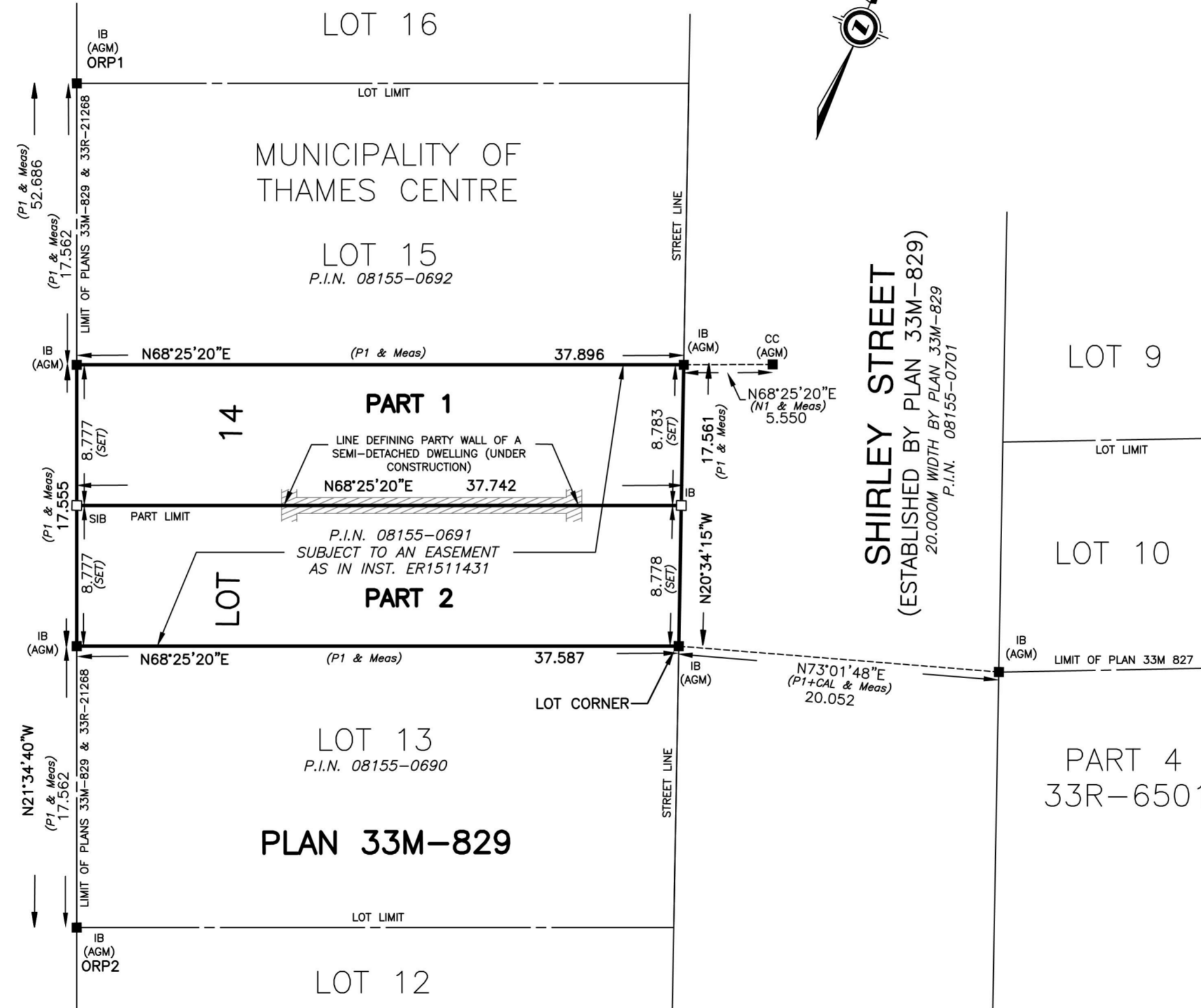
OBSERVED REFERENCE POINTS (ORPs) DERIVED FROM G.N.S.S. OBSERVATIONS USING REAL TIME NETWORK (RTN). U.T.M. ZONE 17, NAD83 (CSRS) EPOCH(2010). COORDINATES TO URBAN ACCURACY PER SEC. 14(2) OF O.REG. 216/10		
POINT ID	NORTHING	EASTING
ORP 1	4772666.38	488316.20
ORP 2	4772617.41	488335.57

COORDINATES CANNOT, IN THEMSELVES, BE USED TO RE-ESTABLISH CORNERS OR BOUNDARIES SHOWN ON THIS PLAN.

NOTES & LEGEND

- DENOTES MONUMENT FOUND
- DENOTES MONUMENT PLANTED
- SIB DENOTES STANDARD IRON BAR
- IB DENOTES IRON BAR
- CC DENOTES CUT CROSS
- AGM DENOTES ARCHIBALD, GRAY & MCKAY LTD., O.L.S.'s
- P1 DENOTES PLAN 33M-829
- N1 DENOTES AGM FILE NW-M829 CONTROL

PART 8 PLAN 33R-21268 P.I.N. 08155-0676



PART SCHEDULE			
PART	LOT	PLAN	P.I.N.
1	ALL OF 14	PLAN 33M-829	ALL OF 08155-0691
2			

PARTS 1 AND 2 COMPRISES ALL OF PIN 08155-0691
PARTS 1 AND 2 ARE SUBJECT TO AN EASEMENT AS IN INST. ER1511431

PLAN 33R-21737

Received and deposited

October 26th, 2023

Silva Pranter

Representative for the
Land Registrar for the
Land Titles Division of
Middlesex (No.33)

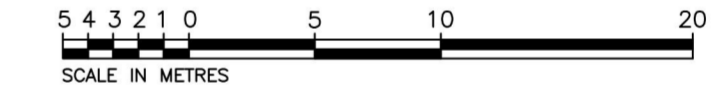
PLAN OF SURVEY

ALL OF
LOT 14, PLAN 33M-829

(GEOGRAPHIC TOWNSHIP OF
WEST NISSOURI)

IN THE
MUNICIPALITY OF
THAMES CENTRE
COUNTY OF MIDDLESEX

SCALE 1:300



THE INTENDED PLOT SIZE OF THIS PLAN IS 610mm IN WIDTH BY (355mm IN HEIGHT WHEN PLOTTED AT A SCALE OF 1:300)

2023
ARCHIBALD, GRAY & MCKAY LTD.
ONTARIO LAND SURVEYORS

SURVEYOR'S CERTIFICATE:

I CERTIFY THAT:

- THIS SURVEY AND PLAN ARE CORRECT AND IN ACCORDANCE WITH THE SURVEYS ACT, THE SURVEYORS ACT AND THE LAND TITLES ACT AND THE REGULATIONS MADE UNDER THEM.
- THE SURVEY WAS COMPLETED ON THE 11th DAY OF SEPTEMBER, 2023.

OCTOBER, 25, 2023

DATE

JUAN D. ZAPATA
ONTARIO LAND SURVEYOR

THIS PLAN OF SURVEY IS RELATED TO
AOLS PLAN SUBMISSION FORM NUMBER V58877

LOT 14 33M-829	
PART	AREA
1	332.241 sq m 3576.212 sq ft
2	330.58 sq m 3558.344 sq ft

METRIC: DISTANCES AND COORDINATES SHOWN ON THIS PLAN ARE IN METRES AND CAN BE CONVERTED TO FEET BY DIVIDING BY 0.3048.

AGM ARCHIBALD, GRAY & MCKAY LTD.
3514 WHITE OAK ROAD, LONDON, ON, N6E 2Z9
PHONE 519-685-5300 FAX 519-685-5303
EMAIL info@agm.on.ca WEB www.agm.on.ca

DRAWN BY: FE	DIGITAL FILE: M829L14SR.dwg	PLAN No:
CHECKED BY: MIG	JOB FILE: 33M829GN.COG	2-Z-8677
Plot date: Oct 25, 2023	FILE No: NW-M829-01-2	