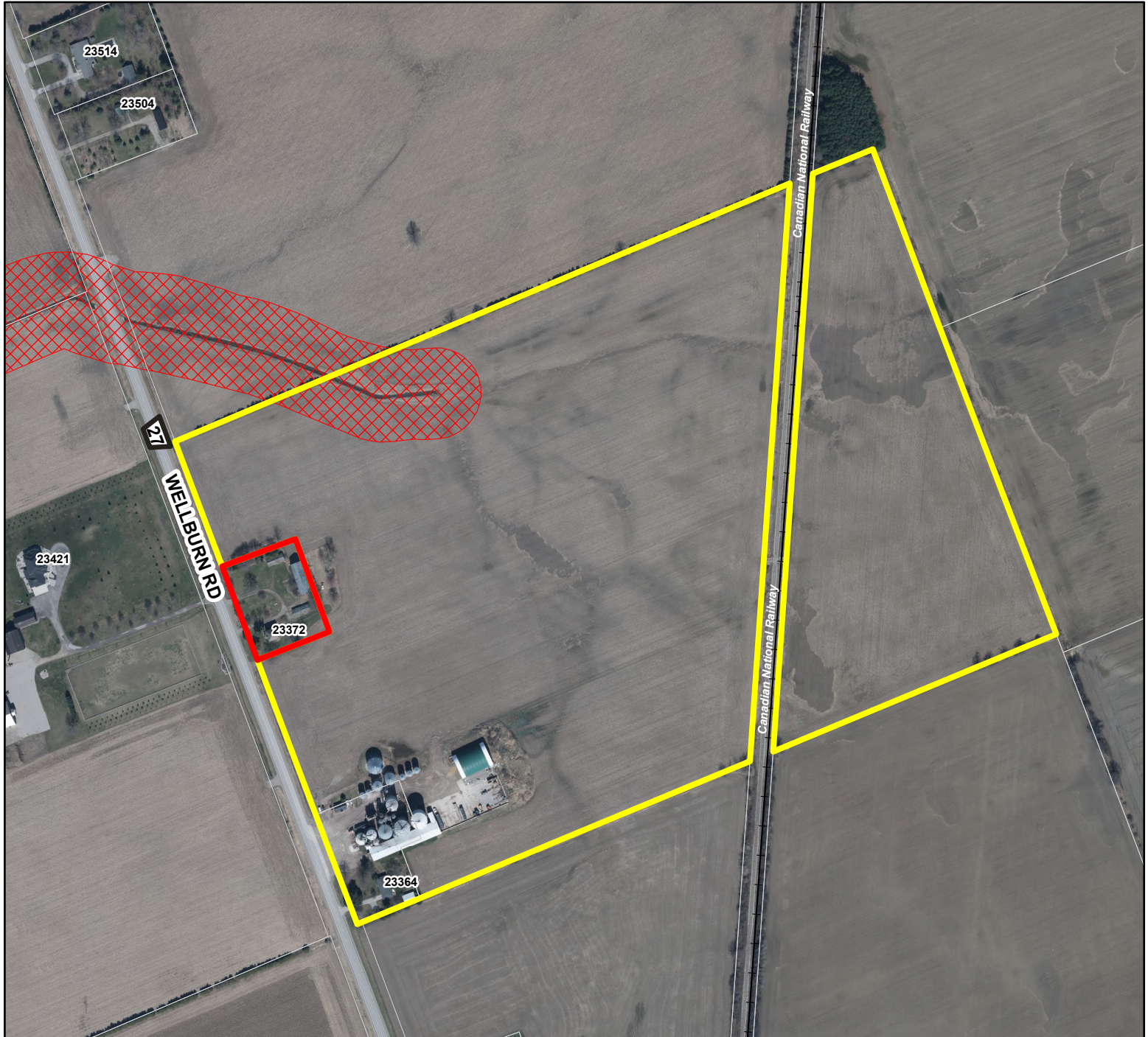


APPLICATION FOR CONSENT: B-17-2024
Owner: Plover Mills Commodities Ltd



22372 & 23364 Wellburn Road
CON 6 W PT LOT 29 RP 33R5758 PARTS 1&2 And CON 6 S PT LOT 29

Municipality of THAMES CENTRE



Published by the County of Middlesex
Planning Department
399 Ridout Street North, London, ON N6A 2P1
(519) 434-7321
December, 2024

-  Lands to be retained
-  Lands to be severed
-  CA Regulated Area



1:5,000

0 45 90 180 Metres

Disclaimer: This map is for illustrative purposes only. Do not rely on it as being a precise indicator of routes, locations of features, nor as a guide to navigation.