

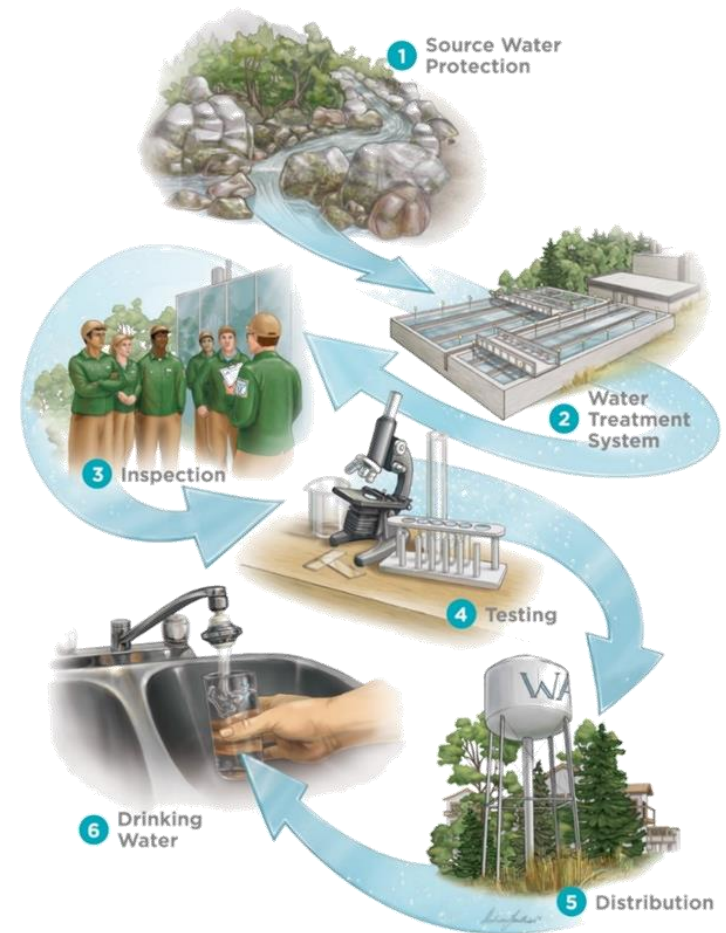
# Thames-Sydenham Source Protection Plan Amendment

January 13, 2025

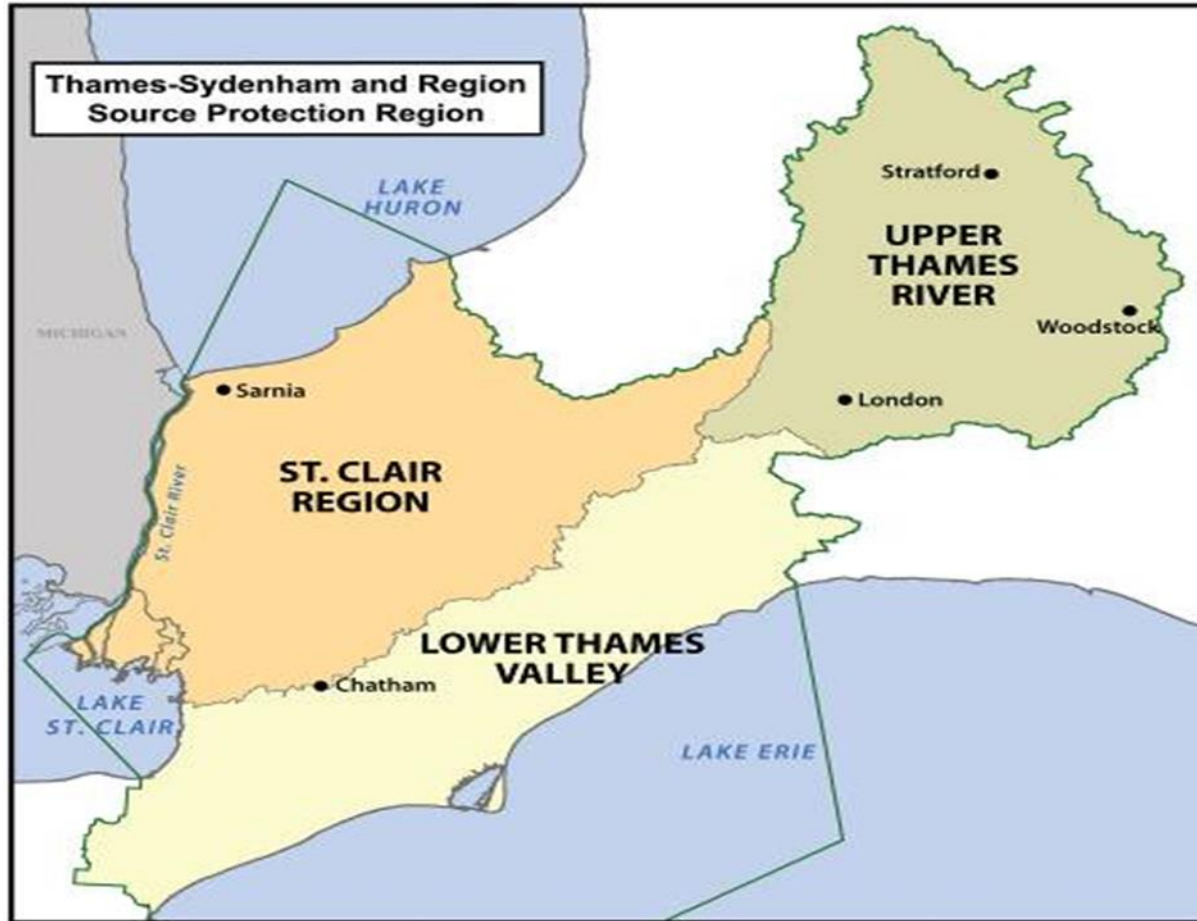
Thames Centre

# Clean Water Act, 2006

- The purpose of the Act is to protect existing and future sources of drinking water from contamination or depletion.
- The Drinking Water Source Protection Program is a multi-stakeholder, collaborative, locally-driven process to protect municipal residential drinking water sources.



# Thames-Sydenham Source Protection Region



DRINKING WATER **SOURCE PROTECTION**

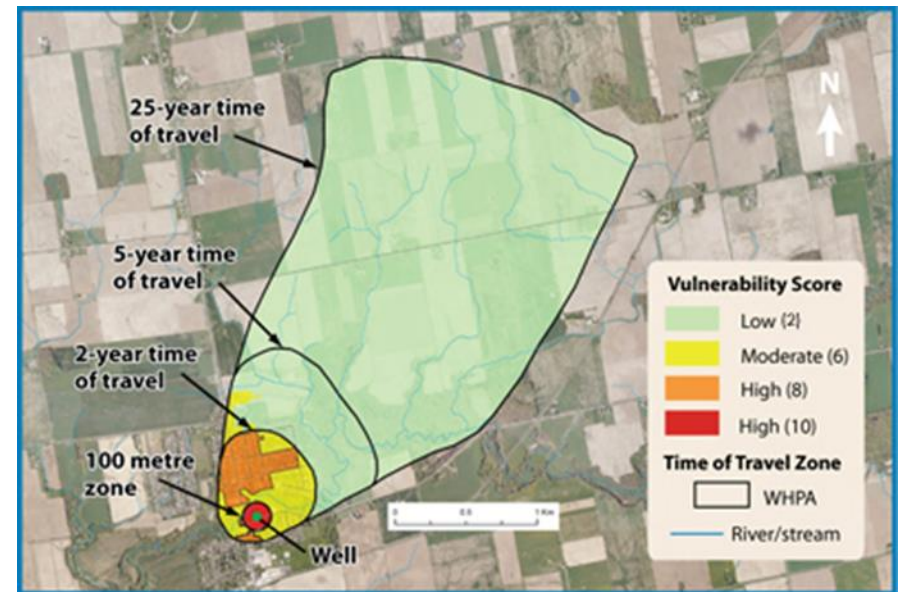


UPPER THAMES RIVER  
CONSERVATION AUTHORITY

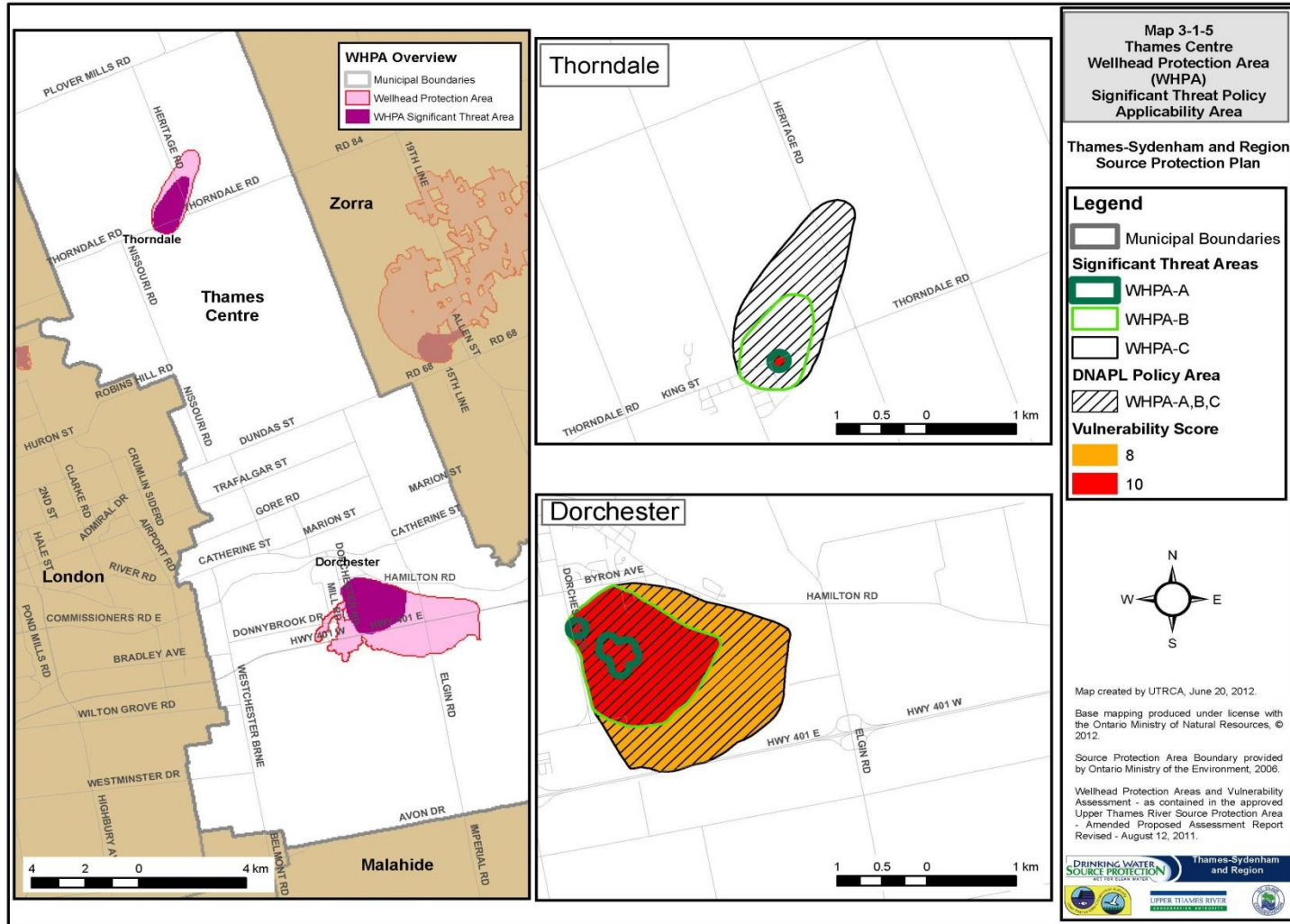
# Technical Rules

Technical Rules prescribe technical methods to:

- delineate vulnerable areas around drinking water sources;
- determine their vulnerability to contamination;
- identify threat activities (22 prescribed threat activities) and;
- assess risk levels.



# Thames Centre Wellhead Protection Areas



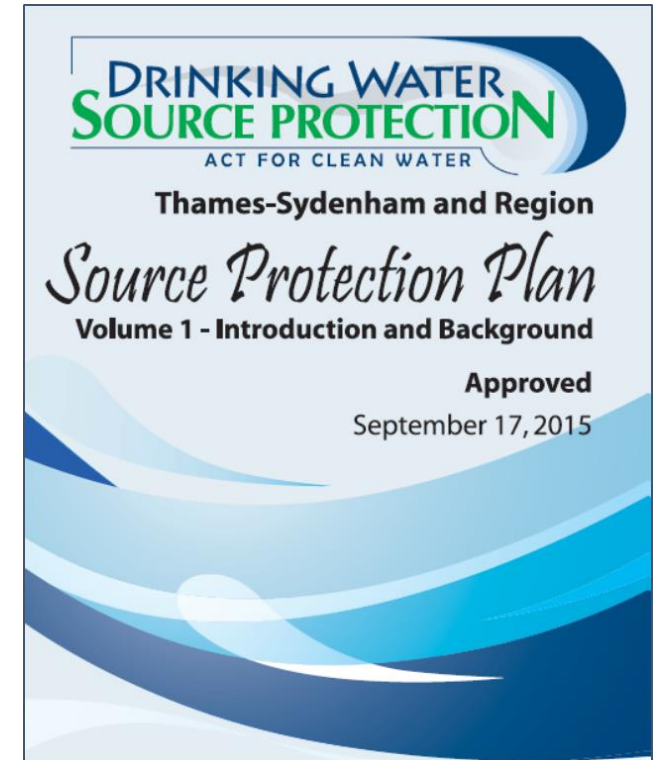
# Source Protection Plan and Assessment Reports

## Source Protection Plan

- Source Protection Committee develops the Source Protection Plan
- Source Protection Plan lays out policies within vulnerable areas (Prohibition, Management, Education and Outreach)

## Assessment Reports

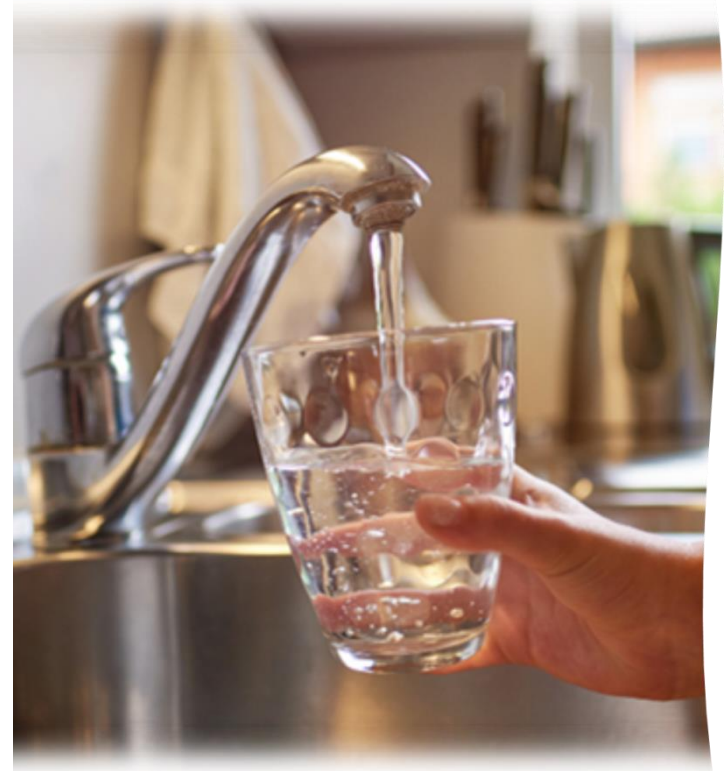
- Houses all the science for each municipal system in region
- Including: water budgets, vulnerable areas, threats



# Amendments to SPP and AR

Under the *Clean Water Act*, 2006 amendments are allowed to the SPP and AR under s.34 and s.36

- Amendments can occur when:
  - New or changing systems are necessary
  - Updates to Technical Rules



# 2021 Technical Rule Updates

---

- On December 3, 2021 the Ministry of Environment, Conservation and Parks released an update to the 2021 Director Technical Rules under the Clean Water Act, 2006.
- As a result the Thames-Sydenham Source Protection Authority conducted a comprehensive review of the current policies in the Source Protection Plan Volume III.
- This review led to several proposed policies changes along with proposed new ones to align with the updated rules. These could affect your municipality.
- Changes to **Fuel, Snow, Waste, Sewage (including Stormwater), Salt, Commercial Fertilizers, DNAPLs, Pesticides**



# Impacts to Thames Centre

1. Fuel – Circumstances changed from 2,500 L to 250 L
2. Road Salt – Education and Outreach
3. Commercial Fertilizers – Prohibition with a WHPA-A (100 m around well)

Possible impacts on future activities based on threats from previous slide



# s.34 Amendment Process

---

1. Early Engagement
2. Pre-Consultation with implementers
3. Council Resolutions
4. Public Consultation
5. Final Submission to MECP



Thank you

Julie Welker

Source Protection Coordinator  
Thames-Sydenham & Region Drinking Water  
Source Protection

[welkerj@thamesriver.on.ca](mailto:welkerj@thamesriver.on.ca)

[www.sourcewaterprotection.on.ca](http://www.sourcewaterprotection.on.ca)

Questions?

