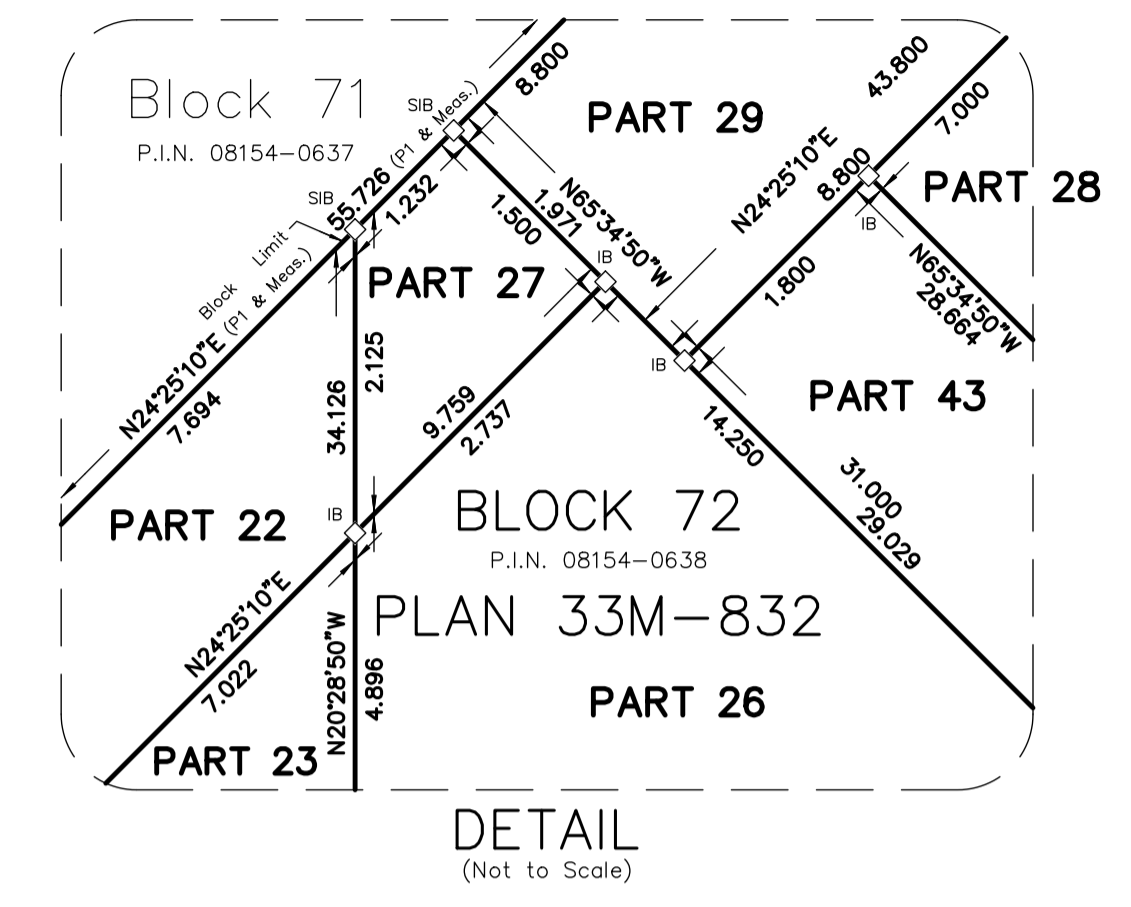


PART	BLOCK	PLAN	P.I.N.
1 to 43, Inclusive	Part of Block 72	Plan 33M-832	Part of P.I.N. 08154-0638
Parts 1 to 43 Inclusive - Comprise All of P.I.N. 08154-0638.			
Parts 1 to 43 Inclusive - Subject to Easement as in Inst. No.'s ER1330881, ER1540096, ER1540097, ER1540098 & ER1540099.			

PLAN 33R-21708
 Received and deposited
September 12th, 2023
Kelly Cochrane-nott
 Representative for the
 Land Registrar for the
 Land Titles Division of
 Middlesex (No.33)

Lot 15, Concession 3
 (Geographic Township of West Nissouri)
 Part 3, Plan 33R-21202

Block 70
 P.I.N. 08154-0636



PLAN 33M-832

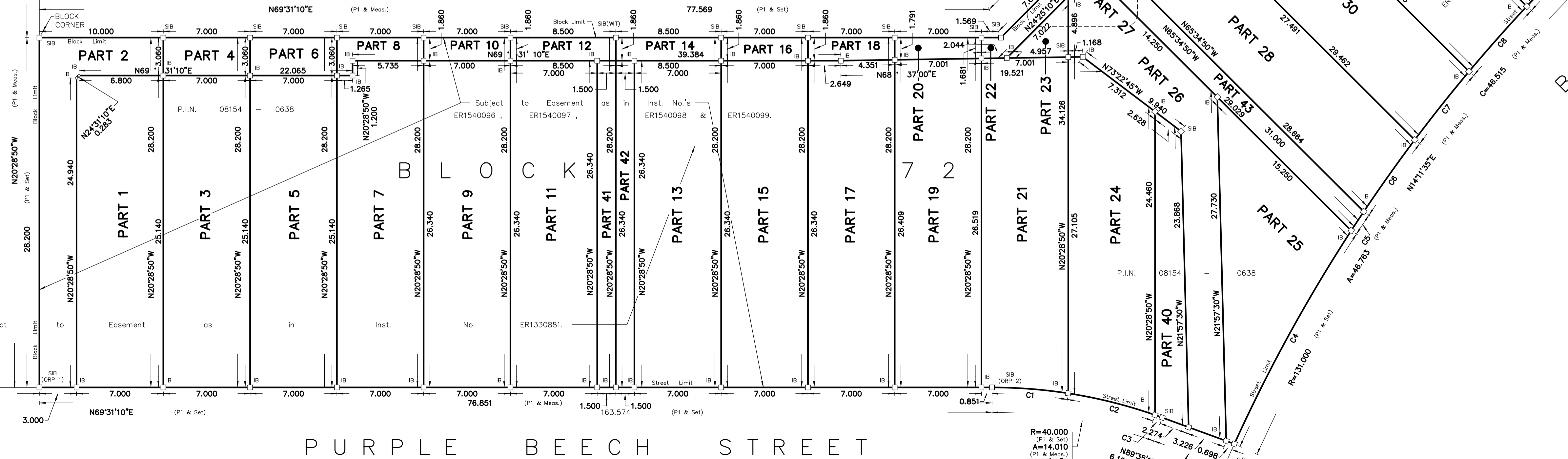
Block 71
 Subject to Easement in Gross as in Inst. No.'s
 ER1540366, ER1540367, ER1540368 & ER1540369
 P.I.N. 08154 - 0637

PLAN OF SURVEY
 OF ALL OF
BLOCK 72, PLAN 33M-832
 IN THE
**MUNICIPALITY OF
 THAMES CENTRE
 COUNTY OF MIDDLESEX**



SCALE 1:200
 THE INTENDED PLOT SIZE OF THIS PLAN IS 1150mm IN WIDTH
 BY 500mm IN HEIGHT WHEN PLOTTED AT A SCALE OF 1:200
 2023
ARCHIBALD, GRAY & MCKAY LTD.
 ONTARIO LAND SURVEYORS

CURVE	RADIUS	ARC	SCHEDULE	CHORD	BEARING	CHORD
C1	40.000	6.174	N73°56'30"E	6.168		
C2	40.000	7.224	N83°32'15"E	7.215		
C3	40.000	0.612	N89°09'00"E	0.612		
C4	131.000	19.630	N 8°15'35"E	19.612		
C5	131.000	1.837	N12°57'15"E	1.837		
C6	131.000	7.098	N14°54'30"E	7.098		
C7	131.000	7.045	N18°00'05"E	7.044		
C8	131.000	7.013	N21°04'35"E	7.012		
C9	131.000	4.140	N23°30'55"E	4.139		



UTM GRID NOTES
 BEARINGS ARE U.T.M. GRID IN NAD83 (C.S.R.S.) (2010.0) DERIVED FROM G.N.S.S. OBSERVATIONS AND THE LEICA SMART-NET BASE STATION NETWORK AND ARE REFERRED TO THE CENTRAL MERIDIAN 81°00' WEST LONGITUDE, ZONE 17.
 LINEAR VALUES SHOWN ON THIS PLAN ARE ADJUSTED GROUND LEVEL DISTANCES AND CAN BE CONVERTED TO GRID DISTANCES BY MULTIPLYING BY A COMBINED SCALE FACTOR OF 0.999563049.

OBSERVED REFERENCE POINTS (ORPs) DERIVED FROM G.N.S.S. OBSERVATIONS USING REAL TIME NETWORK (RTN), U.T.M. ZONE 17, NAD83 (CSRS) (2010.0), COORDINATES TO URBAN ACCURACY PER SEC. 14(2) OF O.REG. 216/10

POINT ID	NORTHING	EASTING
ORP 1	4771784.212	487489.646
ORP 2	4771811.089	487561.608
ORP 3	4771888.465	487575.446

COORDINATES CANNOT, IN THEMSELVES, BE USED TO RE-ESTABLISH CORNERS OR BOUNDARIES ON THIS PLAN.

NOTES AND LEGEND
 ■ DENOTES SURVEY MONUMENT FOUND
 □ DENOTES SURVEY MONUMENT SET
 SIB DENOTES STANDARD IRON BAR
 IB DENOTES IRON BAR
 AGM DENOTES ARCHIBALD, GRAY & MCKAY, O.L.S.'S
 P1 DENOTES PLAN 33M-832
METRIC: DISTANCES AND COORDINATES SHOWN ON THIS PLAN ARE IN METRES AND CAN BE CONVERTED TO FEET BY DIVIDING BY 0.3048.

SURVEYOR'S CERTIFICATE
 I CERTIFY THAT:
 1) THIS SURVEY AND PLAN ARE CORRECT AND IN ACCORDANCE WITH THE SURVEY ACT, THE SURVEYORS ACT AND THE LAND TITLES ACT AND THE REGULATIONS MADE UNDER THEM.
 2) THE SURVEY WAS COMPLETED ON THE 31st DAY OF AUGUST, 2023.
 SEPTEMBER 8th, 2023
 DATE
 THIS PLAN OF SURVEY RELATES TO AOLS PLAN SUBMISSION FORM NUMBER V35102

AGM ARCHIBALD, GRAY & MCKAY LTD.
 3514 WHITE OAK ROAD, LONDON, ON, N6E 2Z9
 PHONE: 519-685-5000 FAX: 519-685-5303
 EMAIL: info@agm.on.ca WEB: www.agm.on.ca

DRAWN BY: NORTON DIGITAL FILE: NW2104 RP3 EC.dwg PLAN No:
 CHECKED BY: R.T.W. COGO FILE: NW2104 RP3 EC.dwg
 PLOT DATE: SEPT 8 2023 FILE No: NW-M832-01-1 **9-L-5961-Z**

NISSOURI ROAD
 (Named by Township By-Law No. 31-95, Registered as Inst. No. L1402501)
 (Original Road Allowance Between Concessions 2 and 3) (Width Varies)